

Instruction Manual

Setup Guide

Read to connect and configure the product

WX01C

AM1-002821-002
November, 2015

Technically Certified

Preface

Thank you for buying the WX01C (simply called the "product" from here on). Before using the product, be sure to read the Setup Guide (this manual) and the Notes on Usage to ensure correct use. The Setup Guide (this manual) handles only basic operations for main features.

As an instruction manual related to the product, the Setup Guide (this manual), the Notes on Usage, and the "取扱説明書 詳細版 (Full Instruction Manual)" (Japanese) are available for download from the Support Information website. In this manual, all such manuals are collectively referred to as the "Instruction Manual".

- The PDF version of the "取扱説明書 詳細版 (Full Instruction Manual)" (Japanese) is also included in the product.
- Connect the product to a PC or the like by means of wireless LAN (Wi-Fi®) or a microUSB cable, launch the web browser, type "http://192.168.179.1" in the address and log in to the Advanced Settings on the Quick Setting Webpage to view "情報 (Information)", and access "マニュアル (Manual)".
- The PDF versions of the Instruction Manuals can be downloaded from the Support Information website. <http://www.necat.co.jp/bwa/support/wx01c/index.html>
- Company names and product names referred to in this manual are trademarks or registered trademarks of the respective companies.
- The illustrations and screenshots that appear in this manual may not be a precise representation of the actual product. Furthermore, part of the screenshots used may be omitted.

Disclaimer and Safety Tips

Before using the product, please read through the "Exemptions" and "Safety Precautions (Observe Strictly)" on the "Notes on usage" to ensure correct handling of the product.

When using the product

- This product can connect with the Broadband Wireless Access system (BWA) (simply called "BWA" from here on).
- Keep the product at least 1.5cm away from your body, and make sure that there are no intervening metallic objects when you communicate.
- Communication is not possible even in the service area in places where the signal does not reach (e.g. tunnels and basements). Also, communication is sometimes not possible in poor reception areas. Communication is sometimes interrupted if you move into a poor reception area during communications.
- Since this product uses radio waves, the possibility of communication interception by third parties cannot be eliminated. (The BWA system, however, offer secure communication encryption and secrecy functions.)
- It is presumed that the product will be used in Japan. It cannot be taken out of Japan and used abroad.
- Since this product is a radio station under the Radio Law, you may be asked to temporarily submit the product for inspection in accordance with the Radio Law.
- Take care not to disturb people around you when you use the product in a public place.
- When the product is used by a child, parents or guardians should thoroughly read the "Instruction Manual" and teach the child how to use it.

Data Communication Terminal Etiquette

- Use of the product is not allowed in the following places!
 - Use of this product on board is restricted. Follow the instructions of each airline.
 - Pay attention to the place of use!
 - In a city area, use in a place where you do not bother people walking.
 - It is extremely dangerous to walk while looking at the screen of the product. Do not operate the product while walking or by stopping suddenly.
 - Move to a place where you do not disturb others while you are in shinkansen, a hotel lobby, etc.
 - Consider people around you!
 - There may be a person with a cardiac pacemaker nearby at a place filled with people such as in a crowded train. Turn off beforehand.
 - When a medical institution has laid down designated areas where use of the product is prohibited or is not allowed to be brought in, abide by the instructions of that medical institution.

Check the Contents of the Package

Before you start using the product, make sure that you have all the following packaged with the product.

- WX01C (main unit)
- AC adapter (AL1-004001-101)
- microUSB cable (AL1-003329-005)
- WX01C Battery pack (NAD3AUAV)
- つかぎたガイド "Setup Guide" (Japanese)
- ご利用にあたっての注意事項 "Notes on Usage" (Japanese)
- 無線LAN初期設定シール "Wireless LAN Initial Setup Label" (Japanese)
- Warranty card (Japanese)

Names and Functions of Components

	Name	Function
①	Display	Lets you view the key settings of the product.
②	POWER button	Turns the power ON / OFF. Used to light up the display that has been automatically turned off.
③	SET button/ RAKURAKU START button	Used to recover the product from a state of waiting or being idle.
④	SELECT button	Used to set display menu and items.
⑤	microUSB port	Used to configure the product with Rakuraku wireless start.
⑥	SIM card slot	Used to connect the enclosed microUSB cable to the product or when placing the product on the cradle (sold separately).
⑦	Strap hole	Insert the BWA Micro IC Card into this slot.
		Used to put a strap.

Waiting or Idling

- Waiting: A function to minimize power consumption in order to increase the operating time.
- Idling: A function for prompt start from wireless idling state.

STEP 1 Preparing for Setup

Attaching the BWA Micro IC Card

When attaching the BWA Micro IC Card, disconnect the product from the power source and make sure to turn off.

Remove the microUSB cable and cradle (sold separately) when they are connected.

- 1 Insert the BWA Micro IC Card with its IC (metal) part facing down until it clicks into position.
 - * This product supports only BWA Micro IC Card. Other IC cards besides BWA Micro IC Card are not available.
 - * Confirm the correct inserting direction of the IC card.
 - * Failure to do so may cause a malfunction or damage.
 - * Refrain from inserting the SD card and IC card with a conversion adapter. Doing so may cause failures.
 - * Be careful not to touch or damage the IC (metal) part of the BWA Micro IC Card.

Attaching the Battery Pack

- 1 Slide the battery pack into the end with the marked surface (Recycling symbol etc.) facing up. Contact the terminal of the battery pack with the terminal of this product and then push in.

- 2 Attach the rear cover
Press the cover onto the unit until the clips of the side of the WX01C logo click into position.
 - * Be sure to firmly press the edges of the cover so that there are no gaps.

Charging the Product

Explains how to charge using the enclosed AC adapter supplied with this product.

- * Charge the battery in power off or idle state. If the battery is charged during operation or when temperature of main unit or battery is high, charging may stop even if the battery is not full in order to keep the battery life long.

- 1 Insert the microUSB connector of the microUSB cable into the microUSB port on the product.
 - * Plug the microUSB connector straight into the microUSB port of this product with its side bearing the USB mark facing down.
- 2 Attach the other end of the USB connector to the AC adapter and insert the power plug of the AC adapter into a power outlet.
 - * Press the POWER button to check the battery status (remaining battery level). The battery level is indicated under the charging icon as a percentage.
 - (An indicator estimates the remaining battery level. It varies depending on the usage environment or status of this product.)
 - * Plug the USB connector into the AC adapter with its side bearing the USB mark facing down.
 - * Make sure that the AC adapter is in a secure position.

* Charging may stop in order to protect the battery from overheating.

For information on how to charge the battery pack on the cradle (sold separately), refer to the Instruction Manual of the cradle "WX01Cクレードル (NAD3APUV) 取扱説明書" (Japanese).

Turning the Power On

Hold down the POWER button until "NEC" appears in the display and this product is turned ON.

- * When the "Normal display" (refer to "Displayed Information" on the reverse side) appears, proceed to **STEP 2**.

* To turn OFF the product, hold down the POWER button until "Power OFF" appears in the product display.

If "New Firmware is released. Do you want to update?" appears on the display when the power is turned on, update the firmware. (Refer to "Firmware Update" on the reverse side)

Consult the homepage for the latest firmware.
Check the product version on the "Terminal Info" display. (Reference to "Display Menu Operations" on the back surface.)
When "New Program Released" appears on the display of this product, it indicates that a new firmware exists. In that case, refer to the "Firmware Update" on the back surface of this manual to update the version.

Switching to English display

- 1 Launch the Quick Setting Webpage and log in (Refer to **STEP 4**).
- 2 Click [English] and then click [Save] from the menu on the left of the Quick Setting Webpage screen.
 - * The display and the Quick Setting Webpage of this product will switch to English.

Check

Verify the following product settings.

- Primary SSID (wx01c-xxxxxx)
 - Primary key (encryption key) (AES) (13 alphanumeric characters)
- Confirm the enclosed "Wireless LAN Initial Setup Label".**
- How to confirm by the display menu is described below.
- ① While the product display is in the normal display, press the SELECT button a few times to display [Wi-Fi Info].
 - ② Press the SET button to display the Primary SSID.
 - ③ Press the SELECT button to display the Primary Key.



- * Have these available for **STEP 2**.
- * The Primary SSID and Primary key of this product are also indicated on the sticker under the battery pack.

STEP 2 Connecting via Wireless LAN (Wi-Fi®)

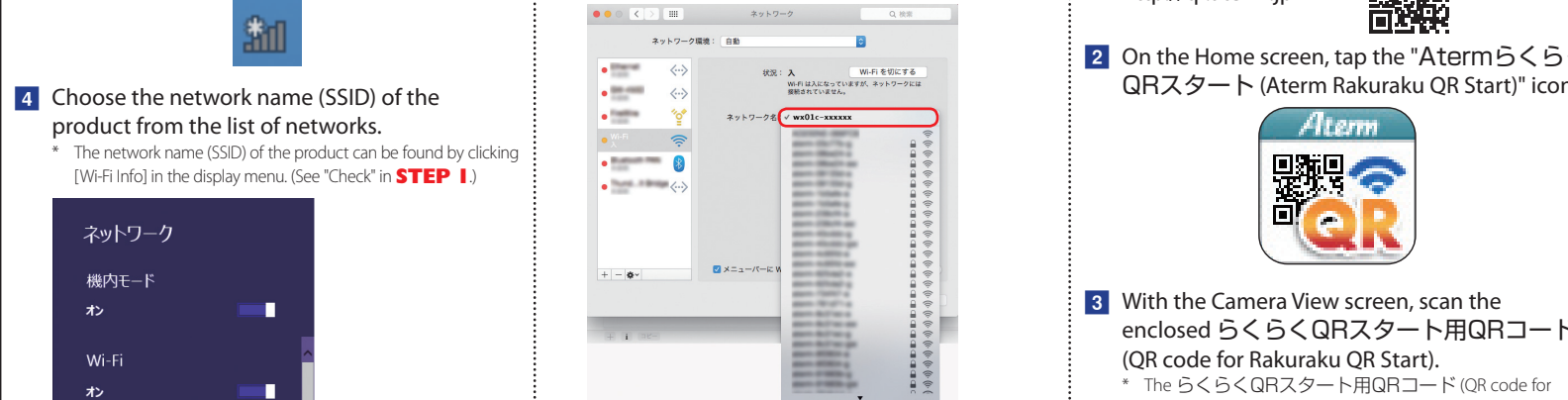
Data communication can be performed with this product by connecting wireless LAN (Wi-Fi®) devices such as a PC, game console, smartphone, etc. Up to 10 wireless LAN (Wi-Fi®) devices can be connected to this product.

However, the wireless LAN (Wi-Fi®) function and the Bluetooth function cannot be used simultaneously.

Windows 10/8.1/8

(The screen displays are examples of Windows 8.1.)
This section explains how to establish a wireless LAN (Wi-Fi®) connection by WPS.

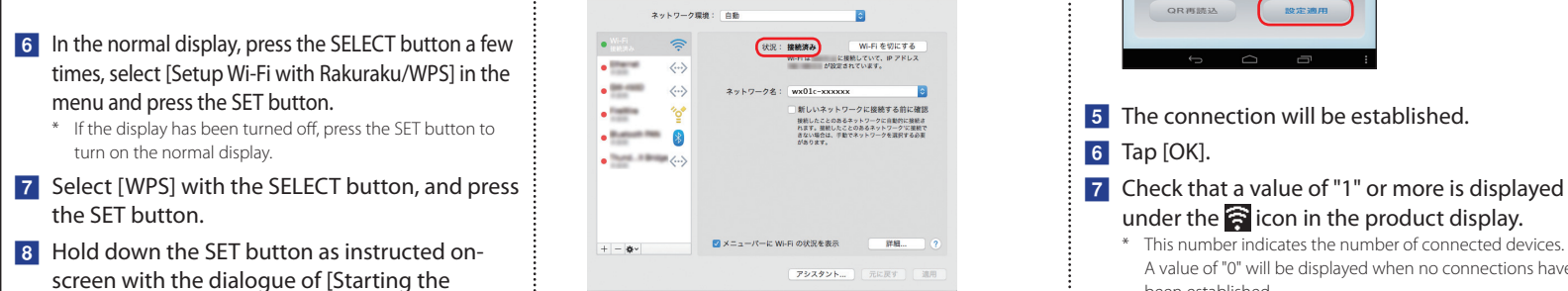
- 1 When you use Windows 8.1/8, select [デスクトップ (Desktop)] on the [スタート (Start)] screen.
- 2 Enable the wireless function of your PC.
 - * For details on configurations, refer to relevant documentation such as the instruction manual for your PC.
- 3 Click the network icon appearing in the notification area (task tray).



- 4 Choose the network name (SSID) of the product from the list of networks.
 - * The network name (SSID) of the product can be found by clicking [Wi-Fi Info] in the display menu. (See "Check" in **STEP 1**.)
- 5 Click [接続 (Connect)].



- 6 In the normal display, press the SELECT button a few times, select [Setup Wi-Fi with Rakuraku/WPS] in the menu and press the SET button.
 - * If the display has been turned off, press the SET button to turn on the normal display.
- 7 Select [WPS] with the SELECT button, and press the SET button.



- 8 Hold down the SET button as instructed on-screen with the dialogue of [Starting the waiting... Press [SET] and Hold it].
- 9 The message [Setup completes] will be displayed.
- 10 Check that a value of "1" or more is displayed under the [接続済み (Connected)] icon in the product display.
 - * This number indicates the number of connected devices. A value of "0" will be displayed when no connections have been established.

STEP 3 Verifying the Connection Status

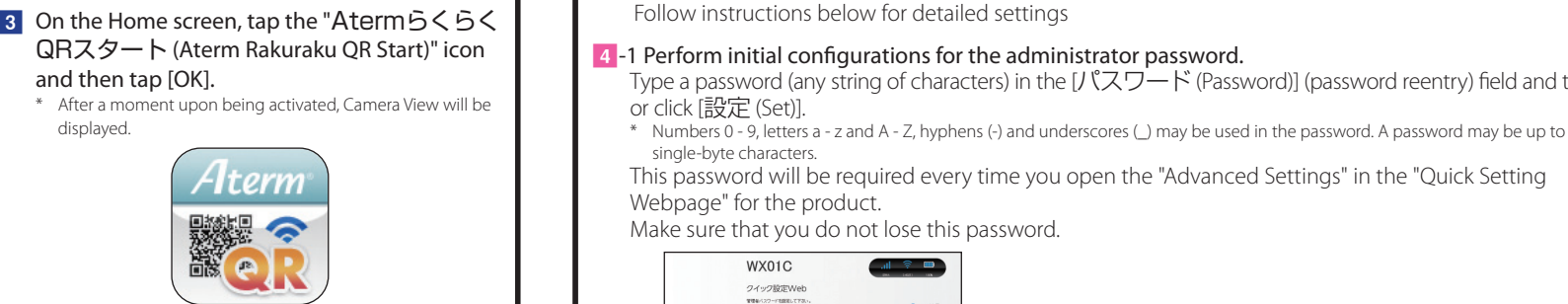
- ◆ If [BWA] is displayed along with [Wi-Fi] in the display and this product can be connected to the Internet.
- ◆ If [BWA] is displayed along with [Wi-Fi] in the display and this product cannot be connected to the Internet, configure the connection destination in **STEP 4**.
- ◆ If the Wireless LAN (Wi-Fi®) connection with the product is not established, Select [Functions Maintenance] - [Wi-Fi Management Frame] in the display menu, set [No Protection] and reconnect via Wi-Fi in **STEP 2**.
- ◆ If "Not available" is displayed, configure the connection destination in **STEP 4**.

iPad/iPhone/iPod touch

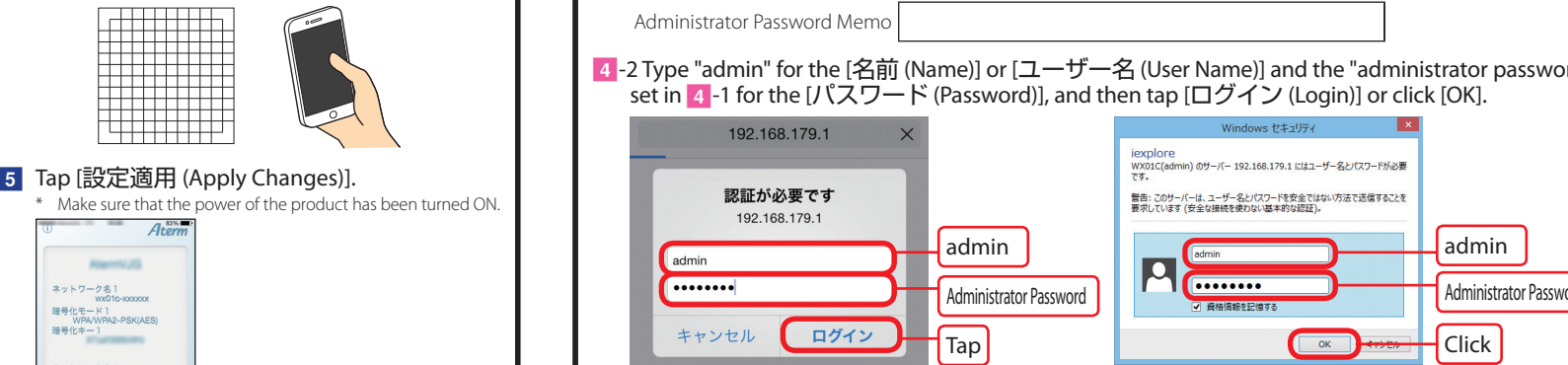
Configuring with Rakuraku QR start

- 1 Search the App Store for the "AtermらくらくQRスタート" for iOS (Aterm Rakuraku QR Start for iOS) application to download and install it.
 - * This application is also available for download on the "AtermらくらくQRスタート (Aterm Rakuraku QR Start)" website listed below (as of November, 2015).

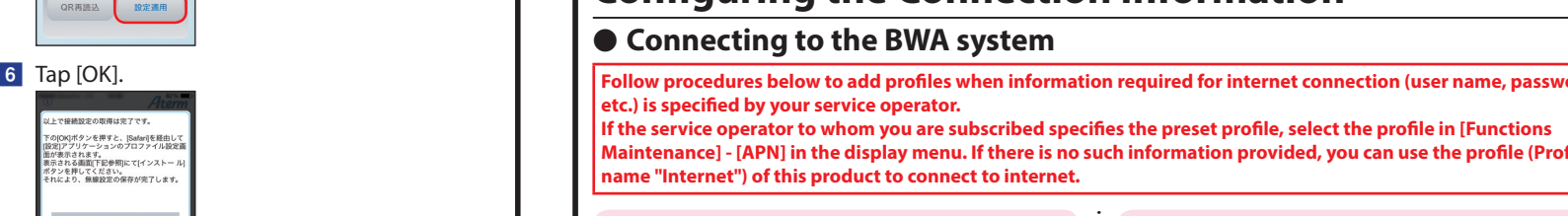
- 2 On the Home screen, tap [設定 (Configure)] to turn off the [機内モード (Airplane Mode)] and turn on [Wi-Fi].
- 3 On the Home screen, tap the "AtermらくらくQRスタート (Aterm Rakuraku QR Start)" icon and then tap [OK].
 - * After a moment upon being activated, Camera View will be displayed.



- 4 With the Camera View screen, scan the enclosed らくらくQRスタート用QRコード (QR code for Rakuraku QR Start).
 - * The らくらくQRスタート用QRコード (QR code for Rakuraku QR Start) may be attached to the space provided below.



- 5 Tap [設定適用 (Apply Changes)].
 - * Make sure that the power of the product has been turned ON.
- 6 Tap [OK].



- 7 Tap [インストール (Install)].
- 8 Tap [インストール (Install)].
- 9 Tap [インストール (Install)].
- 10 Tap [完了 (Complete)] - [OK].
- 11 Check that a value of "1" or more is displayed under the [接続済み (Connected)] icon in the product display.
 - * This number indicates the number of connected devices. A value of "0" will be displayed when no connections have been established.

- 12 Tap [インストール (Install)].
- 13 Tap [インストール (Install)].
- 14 Tap [完了 (Complete)] - [OK].
- 15 Check that a value of "1" or more is displayed under the [接続済み (Connected)] icon in the product display.
 - * This number indicates the number of connected devices. A value of "0" will be displayed when no connections have been established.

- 16 Tap [インストール (Install)].
- 17 Tap [インストール (Install)].
- 18 Tap [完了 (Complete)] - [OK].
- 19 Check that a value of "1" or more is displayed under the [接続済み (Connected)] icon in the product display.
 - * This number indicates the number of connected devices. A value of "0" will be displayed when no connections have been established.

- 20 Tap [インストール (Install)].
- 21 Tap [インストール (Install)].
- 22 Tap [完了 (Complete)] - [OK].
- 23 Check that a value of "1" or more is displayed under the [接続済み (Connected)] icon in the product display.
 - * This number indicates the number of connected devices. A value of "0" will be displayed when no connections have been established.

- 24 Tap [インストール (Install)].
- 25 Tap [インストール (Install)].
- 26 Tap [完了 (Complete)] - [OK].
- 27 Check that a value of "1" or more is displayed under the [接続済み (Connected)] icon in the product display.
 - * This number indicates the number of connected devices. A value of "0" will be displayed when no connections have been established.

- 28 Tap [インストール (Install)].
- 29 Tap [インストール (Install)].
- 30 Tap [完了 (Complete)] - [OK].
- 31 Check that a value of "1" or more is displayed under the [接続済み (Connected)] icon in the product display.
 - * This number indicates the number of connected devices. A value of "0" will be displayed when no connections have been established.

- 32 Tap [インストール (Install)].
- 33 Tap [インストール (Install)].
- 34 Tap [完了 (Complete)] - [OK].
- 35 Check that a value of "1" or more is displayed under the [接続済み (Connected)] icon in the product display.
 - * This number indicates the number of connected devices. A value of "0" will be displayed when no connections have been established.

- 36 Tap [インストール (Install)].
- 37 Tap [インストール (Install)].
- 38 Tap [完了 (Complete)] - [OK].
- 39 Check that a value of "1" or more is displayed under the [接続済み (Connected)] icon in the product display.
 - * This number indicates the number of connected devices. A value of "0" will be displayed when no connections have been established.

- 40 Tap [インストール (Install)].
- 41 Tap [インストール (Install)].
- 42 Tap [完了 (Complete)] - [OK].
- 43 Check that a value of "1" or more is displayed under the [接続済み (Connected)] icon in the product display.
 - * This number indicates the number of connected devices. A value of "0" will be displayed when no connections have been established.

- 44 Tap [インストール (Install)].
- 45 Tap [インストール (Install)].
- 46 Tap [完了 (Complete)] - [OK].
- 47 Check that a value of "1" or more is displayed under the [接続済み (Connected)] icon in the product display.
 - * This number indicates the number of connected devices. A value of "0" will be displayed when no connections have been established.

STEP 4 Configuring the Connection Destination BWA / Wi-Fi SPOT Connection

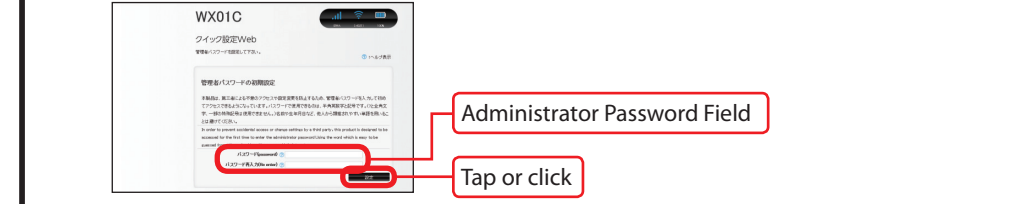
Launch the Quick Setting Webpage

- 1 Open the web browser on the wireless LAN (Wi-Fi®) device (such as a smartphone) connected to the product in **STEP 2**.
- 2 Open Quick Setting Webpage for the product. Type "http://192.168.179.1" into the address bar in the web browser and either tap [実行 (Execute)] or [開く (Open)], or press the Enter key on the keyboard.

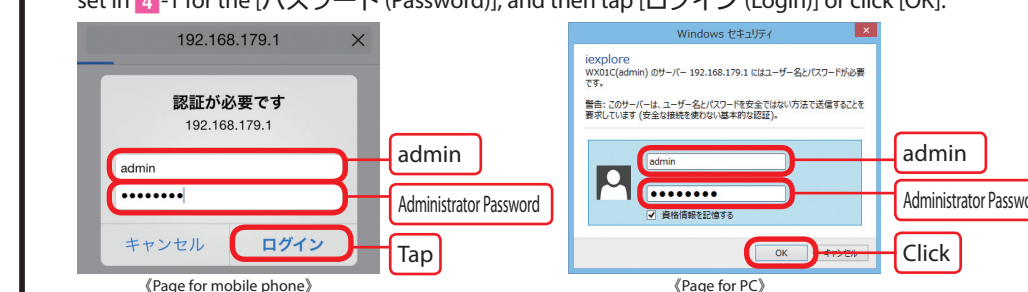


Follow instructions below for detailed settings

- 4 -1 Perform initial configurations for the administrator password. Type a password (any string of characters) in the [パスワード (Password)] (password reentry) field and tap or click [設定 (Set)].
 - * Numbers 0 - 9, letters a - z and A - Z, hyphens (-) and underscores (_) may be used in the password. A password may be up to 64 single-byte characters.This password will be required every time you open the "Advanced Settings" in the "Quick Setting Webpage" for the product. Make sure that you do not lose this password.



- 4 -2 Type "admin" for the [名前 (Name)] or [ユーザー名 (User Name)] and the "administrator password" set in 4 -1 for the [パスワード (Password)], and then tap [ログイン (Login)] or click [OK].



Configuring the Connection Information

- Connecting to the BWA system
- Follow procedures below to add profiles when information required for internet connection (user name, password etc.) is specified by your service operator.
- If the service operator to whom you are subscribed specifies the preset profile, select the profile in [Functions Maintenance] - [APN] in the display menu. If there is no such information provided, you can use the profile (Profile name "Internet") of this product to connect to internet.

When using a smartphone / tablet (Android) / iPad / iPhone / iPod touch

- 1 Tap [ネットワーク設定 (Network Settings)] - [プロファイル設定 (Profile Settings)].
- 2 After selecting [No setup] in the [プロファイルリスト (Profile List)], tap [選択 (Select)], enter the setup information such as the APN of the service operator to whom you are subscribed, and tap [設定 (Apply)].
 - * The displayed content may be grayed out.
 - * If you have any question, please check with the service operator to whom you are subscribed to.
- 3 Tap [詳細設定TOPへ (Advanced Settings Top)].
- 4 Tap [ネットワーク設定 (Network Settings)] - [接続設定 (Connection Settings)].
- 5 In the Profile Selection, select the profile which you selected in Step 2, and tap [設定 (Apply)].
- 6 Tap [詳細設定TOPへ (Advanced Settings Top)], and tap [保存 (Save)].

Try opening a website to verify the connection.

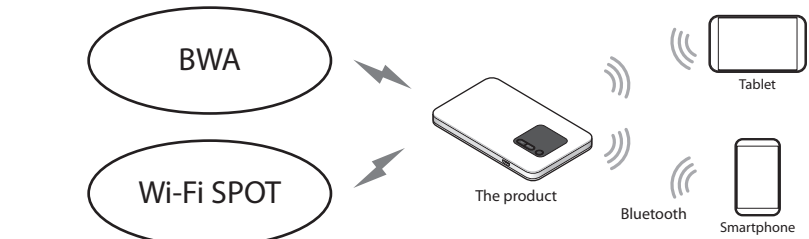
Connecting to a Wi-Fi SPOT (Public Wireless LAN Service)

- When using a smartphone / tablet (Android) / iPad / iPhone / iPod touch
- * Tap [← PC用ページに戻ります。] (To the PC-optimized page)] and perform configurations by following the steps in "When using a PC" in the screen for the Quick Setting Webpage for PC.

- 1 Tap [← PC用ページに戻ります。] (To the PC-optimized page)] and perform configurations by following the steps in "When using a PC" in the screen for the Quick Setting Webpage for PC.
- 2 Tap [← PC用ページに戻ります。] (To the PC-optimized page)] and perform configurations by following the steps in "When using a PC" in the screen for the Quick Setting Webpage for PC.
- 3 Tap [← PC用ページに戻ります。] (To the PC-optimized page)] and perform configurations by following the steps in "When using a PC" in the screen for the Quick Setting Webpage for PC.
- 4 Tap [← PC用ページに戻ります。] (To the PC-optimized page)] and perform configurations by following the steps in "When using a PC" in the screen for the Quick Setting Webpage for PC.
- 5 Tap [← PC用ページに戻ります。] (To the PC-optimized page)] and perform configurations by following the steps in "When using a PC" in the screen for the Quick Setting Webpage for PC.
- 6 Tap [← PC用ページに戻ります。] (To the PC-optimized page)] and perform configurations by following the steps in "When using a PC" in the screen for the Quick Setting Webpage for PC.
- 7 Tap [← PC用ページに戻ります。] (To the PC-optimized page)] and perform configurations by following the steps in "When using a PC" in the screen for the Quick Setting Webpage for PC.
- 8 Tap [← PC用ページに戻ります。] (To the PC-optimized page)] and perform configurations by following the steps in "When using a PC" in the screen for the Quick Setting Webpage for PC.
- 9 Tap [← PC用ページに戻ります。] (To the PC-optimized page)] and perform configurations by following the steps in "When using a PC" in the screen for the Quick Setting Webpage for PC.
- 10 Tap [← PC用ページに戻ります。] (To the PC-optimized page)] and perform configurations by following the steps in "When using a PC" in the screen for the Quick Setting Webpage for PC.
- 11 Tap [← PC用ページに戻ります。] (To the PC-optimized page)] and perform configurations by following the steps in "When using a PC" in the screen for the Quick Setting Webpage for PC.
- 12 Tap [← PC用ページに戻ります。] (To the PC-optimized page)] and perform configurations by following the steps in "When using a PC" in the screen for the Quick Setting Webpage for PC.
- 13 Tap [← PC用ページに戻ります。] (To the PC-optimized page)] and perform configurations by following the steps in "When using a PC" in the screen for the Quick Setting Webpage for PC.
- 14 Tap [← PC用ページに戻ります。] (To the PC-optimized page)] and perform configurations by following the steps in "When using a PC" in the screen for the Quick Setting Webpage for PC.
- 15 Tap [← PC用ページに戻ります。] (To the PC-optimized page)] and perform configurations by following the steps in "When using a PC" in the screen for the Quick Setting Webpage for PC.
- 16 Tap [← PC用ページに戻ります。] (To the PC-optimized page)] and perform configurations by following the steps in "When using a PC" in the screen for the Quick Setting Webpage for PC.
- 17 Tap [← PC用ページに戻ります。] (To the PC-optimized page)] and perform configurations by following the steps in "When using a PC" in the screen for the Quick Setting Webpage for PC.
- 18 Tap [← PC用ページに戻ります。] (To the PC-optimized page)] and perform configurations by following the steps in "When using a PC" in the screen for the Quick Setting Webpage for PC.
- 19 Tap [← PC用ページに戻ります。] (To the PC-optimized page)] and perform configurations by following the steps in "When using a PC" in the screen for the Quick Setting Webpage for PC.
- 20 Tap [← PC用ページに戻ります。] (To the PC-optimized page)] and perform configurations by following the steps in "When using a PC" in the screen for the Quick Setting Webpage for PC.
- 21 Tap [← PC用ページに戻ります。] (To the PC-optimized page)] and perform configurations by following the steps in "When using a PC" in the screen for the Quick Setting Webpage for PC.
- 22 Tap [← PC用ページに戻ります。] (To the PC-optimized page)] and perform configurations by following the steps in "When using a PC" in the screen for the Quick Setting Webpage for PC.
- 23 Tap [← PC用ページに戻ります。] (To the PC-optimized page)] and perform configurations by following the steps in "When using a PC" in the screen for the Quick Setting Webpage for PC.
- 24 Tap [← PC用ページに戻ります。] (To the PC-optimized page)] and perform configurations by following the steps in "When using a PC" in the screen for the Quick Setting Webpage for PC.
- 25 Tap [← PC用ページに戻ります。] (To the PC-optimized page)] and perform configurations by following the steps in "When using a PC" in the screen for the Quick Setting Webpage for PC.
- 26 Tap [← PC用ページに戻ります。] (To the PC-optimized page)] and perform configurations by following the steps in "When using a PC" in the screen for the Quick Setting Webpage for PC.
- 27 Tap [← PC用ページに戻ります。] (To the PC-optimized page)] and perform configurations by following the steps in "When using a PC" in the screen for the Quick Setting Webpage for PC.
- 28 Tap [← PC用ページに戻ります。] (To the PC-optimized page)] and perform configurations by following the steps in "When using a PC" in the screen for the Quick Setting Webpage for PC.
- 29 Tap [← PC用ページに戻ります。] (To the PC-optimized page)] and perform configurations by following the steps in "When using a PC" in the screen for the Quick Setting Webpage for PC.
- 30 Tap [← PC用ページに戻ります。] (To the PC-optimized page)] and perform configurations by following the steps in "When using a PC" in the screen for the Quick Setting Webpage for PC.
- 31 Tap [← PC用ページに戻ります。] (To the PC-optimized page)] and perform configurations by following the steps in "When using a PC" in the screen for the Quick Setting Webpage for PC.
- 32 Tap [← PC用ページに戻ります。] (To the PC-optimized page)] and perform configurations by following the steps in "When using a PC" in the screen for the Quick Setting Webpage for PC.
- 33 Tap [← PC用ページに戻ります。] (To the PC-optimized page)] and perform configurations by following the steps in "When using a PC" in the screen for the Quick Setting Webpage for PC.
- 34 Tap [← PC用ページに戻ります。] (To the PC-optimized page)] and perform configurations by following the steps in "When using a PC" in the screen for the Quick Setting Webpage for PC.
- 35 Tap [← PC用ページに戻ります。] (To the PC-optimized page)] and perform configurations by following the steps in "When using a PC" in the screen for the Quick Setting Webpage for PC.
- 36 Tap [← PC用ページに戻ります。] (To the PC-optimized page)] and perform configurations by following the steps in "When using a PC" in the screen for the Quick Setting Webpage for PC.
- 37 Tap [← PC用ページに戻ります。] (To the PC-optimized page)] and perform configurations by following the steps in "When using a PC" in the screen for the Quick Setting Webpage for PC.
- 38 Tap [← PC用ページに戻ります。] (To the PC-optimized page)] and perform configurations by following the steps in "When using a PC" in the screen for the Quick Setting Webpage for PC.
- 39 Tap [← PC用ページに戻ります。] (To the PC-optimized page)] and perform configurations by following the steps in "When using a PC" in the screen for the Quick Setting Webpage for PC.
- 40 Tap [← PC用ページに戻ります。] (To the PC-optimized page)] and perform configurations by following the steps in "When using a PC" in the screen for the Quick Setting Webpage for PC.
- 41 Tap [← PC用ページに戻ります。] (To the PC-optimized page)] and perform configurations by following the steps in "When using a PC" in the screen for the Quick Setting Webpage for PC.
- 42 Tap [← PC用ページに戻ります。] (To the PC-optimized page)] and perform configurations by following the steps in "When using a PC" in the screen for the Quick Setting Webpage for PC.
- 43 Tap [← PC用ページに戻ります。] (To the PC-optimized page)] and perform configurations by following the steps in "When using a PC" in the screen for the Quick Setting Webpage for PC.
- 44 Tap [← PC用ページに戻ります。] (To the PC-optimized page)] and perform configurations by following the steps in "When using a PC" in the screen for the Quick Setting Webpage for PC.
- 45 Tap [← PC用ページに戻ります。] (To the PC-optimized page)] and perform configurations by following the steps in "When using a PC" in the screen for the Quick Setting Webpage for PC.
- 46 Tap [← PC用ページに戻ります。] (To the PC-optimized page)] and perform configurations by following the steps in "When using a PC" in the screen for the Quick Setting Webpage for PC.
- 47 Tap [← PC用ページに戻ります。] (To the PC-optimized page)] and perform configurations by following the steps in "When using a PC" in the screen for the Quick Setting Webpage for PC.
- 48 Tap [← PC用ページに戻ります。] (To the PC-optimized page)] and perform configurations by following the steps in "When using a PC" in the screen for the Quick Setting Webpage for PC.
- 49 Tap [← PC用ページに戻ります。] (To the PC-optimized page)] and perform configurations by following the steps in "When using a PC" in the screen for the Quick Setting Webpage for PC.
- 50 Tap [← PC用ページに戻ります。] (To the PC-optimized page)] and perform configurations by following the steps in "When using a PC" in the screen for the Quick Setting Webpage for PC.
- 51 Tap [← PC用ページに戻ります。] (To the PC-optimized page)] and perform configurations by following the steps in "When using a PC" in the screen for the Quick Setting Webpage for PC.
- 52 Tap [← PC用ページに戻ります。] (To the PC-optimized page)] and perform configurations by following the steps in "When using a PC" in the screen for the Quick Setting Webpage for PC.
- 53 Tap [← PC用ページに戻ります。] (To the PC-optimized page)] and perform configurations by following the steps in "When using a PC" in the screen for the Quick Setting Webpage for PC.
- 54 Tap [← PC用ページに戻ります。] (To the PC-optimized page)] and perform configurations by following the steps in "When using a PC" in the screen for the Quick Setting Webpage for PC.
- 55 Tap [← PC用ページに戻ります。] (To the PC-optimized page)] and perform configurations by following the steps in "When using a PC" in the screen for the Quick Setting Webpage for PC.
- 56 Tap [← PC用ページに戻ります。] (To the PC-optimized page)] and perform configurations by following the steps in "When using a PC" in the screen for the Quick Setting Webpage for PC.
- 57 Tap [← PC用ページに戻ります。] (To the PC-optimized page)] and perform configurations by following the steps in "When using a PC" in the screen for the Quick Setting Webpage for PC.
- 58 Tap [← PC用ページに戻ります。] (To the PC-optimized page)] and perform configurations by following the steps in "When using a PC" in the screen for the Quick Setting Webpage for PC.
- 59 Tap [← PC用ページに戻ります。] (To the PC-optimized page)] and perform configurations by following the steps in "When using a PC" in the screen for the Quick Setting Webpage for PC.
- 60 Tap [← PC用ページに戻ります。] (To the PC-optimized page)] and perform configurations by following the steps in "When using a PC" in the screen for the Quick Setting Webpage for PC.
- 61 Tap [← PC用ページに戻ります。] (To the PC-optimized page)] and perform configurations by following the steps in "When using a PC" in the screen for the Quick Setting Webpage for PC.
- 62 Tap [← PC用ページに戻ります。] (To the PC-optimized page)] and perform configurations by following the steps in "When using a PC" in the screen for the Quick Setting Webpage for PC.
- 63 Tap [← PC用ページに戻ります。] (To the PC-optimized page)] and perform configurations by following the steps in "When using a PC" in the screen for the Quick Setting Webpage for PC.
- 64 Tap [← PC用ページに戻ります。] (To the PC-optimized page)] and perform configurations by following the steps in "When using a PC" in the screen for the Quick Setting Webpage for PC.
- 65 Tap [← PC用ページに戻ります。] (To the PC-optimized page)] and perform configurations by following the steps in "When using a PC" in the screen for the Quick Setting Webpage for PC.
- 66 Tap [← PC用ページに戻ります。] (To the PC-optimized page)] and perform configurations by following the steps in "When using a PC" in the screen for the Quick Setting Webpage for PC.
- 67 Tap [← PC用ページに戻ります。] (To the PC-optimized page)] and perform configurations by following the steps in "When using a PC" in the screen for the Quick Setting Webpage for PC.
- 68 Tap [← PC用ページに戻ります。] (To the PC-optimized page)] and perform configurations by following the steps in "When using a PC" in the screen for the Quick Setting Webpage for PC.
- 69 Tap [← PC用ページに戻ります。] (To the PC-optimized page)] and perform configurations by following the steps in "When using a PC" in the screen for the Quick Setting Webpage for PC.
- 70 Tap [← PC用ページに戻ります。] (To the PC-optimized page)] and perform configurations by following the steps in "When using a PC" in the screen for the Quick Setting Webpage for PC.
- 71 Tap [← PC用ページに戻ります。] (To the PC-optimized page)] and perform configurations by following the steps in "When using a PC" in the screen for the Quick Setting Webpage for PC.
- 72 Tap [← PC用ページに戻ります。] (To the PC-optimized page)] and perform configurations by following the steps in "When using a PC" in the screen

Connecting via Bluetooth

Use this product as an access point to connect Bluetooth devices such as a smartphone and tablet to the Internet. It is efficient for saving the battery.
Up to seven devices can be connected to the product via Bluetooth. (For pairing, up to 10 devices can be registered.)
However, depending on the ambient reception environment, the number of connected devices may not reach the limit.
Also, the wireless LAN (Wi-Fi*) function and the Bluetooth function cannot be used simultaneously.



- If Bluetooth is disconnected after pairing, tap the Bluetooth device name of this product on the Bluetooth-equipped device screen to reconnect.
- When the number of paired devices reaches the limit, "Registration limit. Delete the pairing information." appears on the display. In that case, delete pairing information displayed in "Bluetooth Pairing Info" on "Bluetooth Settings" in the screen of the Quick Setting Webpage.

Checking the Devices

- Your Bluetooth-equipped device supports Bluetooth 2.1 or later.
- Your device supports the profile (PANU) which can connect to the Internet.

- For the smartphone models that support PANU, see the manufacturer's website.

Preparing for the Connection

Taking a Note of Bluetooth Device Name

- In the normal display, press the SELECT button a few times, select [Terminal Info] in the menu and press the SET button.
- Press the SELECT button to display [Bluetooth Device Name].
The Bluetooth device name of this product is displayed in "Bluetooth Device Name".
Bluetooth Device Name
Memo
* Write it down in the location described in the enclosed つなぎガイド "Setup Guide" (Japanese).

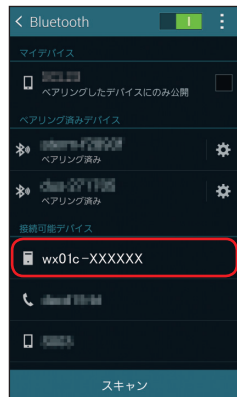
Turning Bluetooth "ON"

- In the normal display, press the SELECT button a few times, select [LAN Selection Wi-Fi/Bluetooth] in the menu and press the SET button.
- Select [Bluetooth] with the SELECT button, and press the SET button.
- Check that [B] is displayed in the normal display.

Configuring the Connection Information

Smartphone / Tablet (Android)

- In the normal display, press the SELECT button a few times, select [Bluetoothペアリング設定 (Bluetooth Pairing Setting)] in the menu and press the SET button.
- Select [YES] with the SELECT button, and press the SET button.
The message "Wait for Pairing" is displayed on the product.
- Tap [設定 (Settings)] - [Bluetooth] on your Bluetooth-equipped device and set to "ON".
- On your Bluetooth-equipped device, tap the Bluetooth device name of this product which has been checked in advance.



- Check that "*****にペアリングします (Start Pairing)" is displayed on this product.
* The Bluetooth-equipped device information, such as the model name, is indicated in "*****".

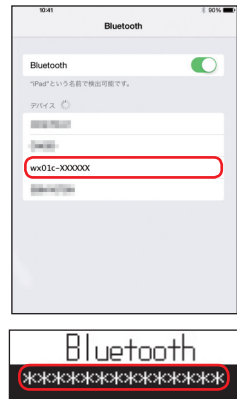
- Tap [ペア設定する (Pairing)] on your Bluetooth-equipped device.
The displayed item may vary depending on the Bluetooth-equipped device.
- Select [YES] with the SELECT button, and press the SET button.
- The message "Pairing Setting succeeds." is displayed on the product.
* If "Pairing Setting fails." is displayed, resume the Step 1.
- On your Bluetooth-equipped device, tap the Bluetooth device name of this product.
If the device cannot be connected to the Internet, tap the icon on the right side of the device name to check that Internet Access (*) is marked.
(*) Screen display may be different depending on the Bluetooth-equipped device.



iPad/iPod touch

* This function is unavailable, as iPhone does not support PANU. (As of November, 2015)

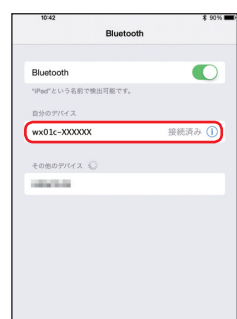
- In the normal display, press the SELECT button a few times, select [Bluetoothペアリング設定 (Bluetooth Pairing Setting)] in the menu and press the SET button.
The message "Wait for Pairing" is displayed on the product.
- Tap [設定 (Set)] - [Bluetooth] on your Bluetooth-equipped device and set to "ON".
- On your Bluetooth-equipped device, tap the Bluetooth device name of this product which has been checked in advance.



- Check that "*****にペアリングします (Start Pairing)" is displayed on this product.
* The Bluetooth-equipped device information, such as the model name, is indicated in "*****".

- Select [YES] with the SELECT button, and press the SET button.
- The message "Pairing Setting succeeds." is displayed on the product.
* If "Pairing Setting fails." is displayed, resume the Step 1.

- Check that "*****接続済み (Connected)" is displayed on your Bluetooth-equipped device.
* The Bluetooth device name of this product is indicated in "*****".



- Check that a value of "1" or more is displayed under [B] in the product display.
This number indicates the number of connected devices.

Display Menu Operations

Various configurations can be performed and information can be confirmed by operating menus with the SELECT/SET buttons in the display.
The screen displays are examples of some of the configurations.

Setting Mode

While the display is turned on, using the SELECT/SET buttons switches the screen as follows.

- Switched by pressing the SELECT button
 - Returns to normal display when the POWER button is pressed while switching menus.
- Switched by pressing the SET button
- Switched by holding down the SET button
- Switched automatically

<Setting Menu>

[Normal Display]

If the display has been turned off, press the POWER button to display the screen.

- Switching between BWA and a Wi-Fi SPOT
This menu is displayed when the "Wi-Fi SPOT" is set to "Enable" in the Quick Setting Webpage. When the product is connected to a Wi-Fi SPOT, "Wi-Fi" is displayed.

- Switching to a Wi-Fi SPOT

- Switching to BWA

- Counter Display
Displays the communication amount on the display.

- [Wi-Fi Band]
This menu is displayed when the 5GHz band is set to "Enable" in Quick Setting Webpage, and not connected to Wi-Fi SPOT.
Note the following points when using the 5GHz band.
 - By default, the product is not set to the 5GHz band.
 - For 5.2GHz or 5.3GHz band, use indoors only.
 - When Outdoor is selected, it takes about one minute to search the channel with the DFS function for avoiding interference of a meteorological radar, etc. ("Checking channel" appears on the display).

- [Wi-Fi Management Frame]
This function enhances encryption of wireless LAN (Wi-Fi) communication.

- [Initialize]
Initializes the product back to its factory settings.
* The screen display will change to Japanese.

- [Reboot]
Reboots the product.

- [LAN Selection Wi-Fi/Bluetooth]
Selects Wi-Fi or Bluetooth tethering for the wireless function on the LAN side.

- [Terminal Info]
Displays information such as the version information of the product and the name of the Bluetooth device.

- [Wi-Fi Info]
Displays the network name (SSID) and the encryption key.
* For the Primary/Secondary key, "Encryption Disabled" is displayed when encryption is disabled in the wireless LAN (Wi-Fi) settings.

- [Save Energy Set]
This function saves energy by limiting the communication speed of BWA and wireless LAN (Wi-Fi).

- [Setup Wi-Fi with Rakuraku/WPS]
This menu is used to setup Rakuraku Wireless and WPS.
Be sure to perform configurations after first activating Rakuraku Wireless Start or WPS on the wireless LAN (Wi-Fi) device.

- [Remote Start]
Sets the Remote Start. If this function is set during the idle state, this product goes into standby for Remote Start. From the Quick Setting Webpage, [ECO設定 (ECO Settings)] - [休止状態設定 (Idle State Settings)] - [リモート起動 (Remote Start)] is also available.

- [Functions Maintenance]
Sets each function.

- [APN]
Selects the saved profile.

- [Wi-Fi Spot]
This menu is displayed when the "Wi-Fi SPOT" is set to "Enable" in the Quick Setting Webpage. When the product is connected to a Wi-Fi SPOT, "Wi-Fi" is displayed.

- [Counter Display]
Displays the communication amount on the display.

- [Wi-Fi Management Frame]
This function enhances encryption of wireless LAN (Wi-Fi) communication.

- [Initialize]
Initializes the product back to its factory settings.
* The screen display will change to Japanese.

- [Reboot]
Reboots the product.

- [LAN Selection Wi-Fi/Bluetooth]
Selects Wi-Fi or Bluetooth tethering for the wireless function on the LAN side.

- [Terminal Info]
Displays information such as the version information of the product and the name of the Bluetooth device.

- [Wi-Fi Info]
Displays the network name (SSID) and the encryption key.
* For the Primary/Secondary key, "Encryption Disabled" is displayed when encryption is disabled in the wireless LAN (Wi-Fi) settings.

- [Save Energy Set]
This function saves energy by limiting the communication speed of BWA and wireless LAN (Wi-Fi).

- [Setup Wi-Fi with Rakuraku/WPS]
This menu is used to setup Rakuraku Wireless and WPS.
Be sure to perform configurations after first activating Rakuraku Wireless Start or WPS on the wireless LAN (Wi-Fi) device.

- [Bluetooth Pairing Setting]
Displays when "LAN Selection Wi-Fi/Bluetooth" is set to "Bluetooth".

- [Roaming Set]
Sets the roaming connection to Roaming (nationwide service operator) network.
* "Roaming Set" will not be displayed when connected to Roaming Network by Roaming Set.

- [Network Info]
Displays the connected network, BWA or Roaming network.

- [Firmware Update]
This menu is displayed to notify users when a firmware update is available.

- [Initialize]
Initializes the product back to its factory settings.
* The screen display will change to Japanese.

- [Reboot]
Reboots the product.

- [LAN Selection Wi-Fi/Bluetooth]
Selects Wi-Fi or Bluetooth tethering for the wireless function on the LAN side.

- [Terminal Info]
Displays information such as the version information of the product and the name of the Bluetooth device.

- [Wi-Fi Info]
Displays the network name (SSID) and the encryption key.
* For the Primary/Secondary key, "Encryption Disabled" is displayed when encryption is disabled in the wireless LAN (Wi-Fi) settings.

- [Save Energy Set]
This function saves energy by limiting the communication speed of BWA and wireless LAN (Wi-Fi).

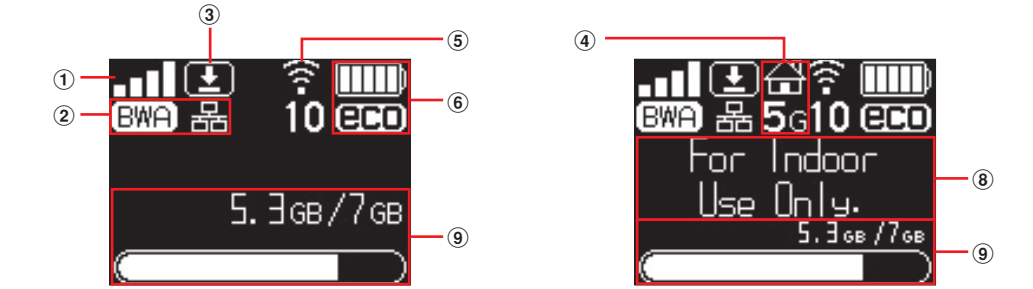
- [Setup Wi-Fi with Rakuraku/WPS]
This menu is used to setup Rakuraku Wireless and WPS.
Be sure to perform configurations after first activating Rakuraku Wireless Start or WPS on the wireless LAN (Wi-Fi) device.

- [Initialize]
Initializes the product back to its factory settings.
* The screen display will change to Japanese.

- [Reboot]
Reboots the product.

Displayed Information

◆ Normal display



◆ Idle state display



Name	Indicator	State	Explanation
1 Reception level	[Signal Strength]	Illuminating	Indicates the signal strength of BWA in 5 levels
	[Signal Strength]	Illuminating	Indicates the signal strength of Wi-Fi SPOT in 6 levels
2 Connection status	[BWA]	Illuminating	Indicates that the product is connected to the Internet with BWA or Roaming Network
	[Wi-Fi]	Illuminating	Indicates that the product is connected to the Internet with Wi-Fi SPOT
	[Wi-Fi]	Blinking	Indicates that a connection to the Internet is trying to be established with Wi-Fi SPOT
	[AP]	Illuminating	Indicates that the device is outside the BWA/WiMAX/Wi-Fi SPOT service area
	[USB]	Illuminating	Indicates that the product is connected to the cradle (sold separately) with wireless LAN access point mode
	[LAN]	Illuminating	Indicates that LAN is connected via USB
3 Firmware update notification	[Firmware Update]	Illuminating	Indicates that the new firmware is released and update is required
4 Wireless LAN (Wi-Fi) band	[Wi-Fi Band]	Illuminating	Indicates that the product is connected to the 2.4GHz band
	[Wi-Fi Band]	Illuminating	Indicates that the product is connected to the 5GHz band (indoor)
	[Wi-Fi Band]	OFF	Indicates that the product is connected to the 5GHz band (outdoor)
5 Wireless status on LAN side	[Wi-Fi Status]	Illuminating	Indicates that the wireless LAN (Wi-Fi) on the LAN side is ON (the number below indicates the connected devices)
	[Wi-Fi Status]	Blinking	Searching the wireless LAN (Wi-Fi) band
	[Wi-Fi Status]	OFF	Indicates that the wireless LAN (Wi-Fi) on the LAN side is OFF
	[Wi-Fi Status]	Illuminating	Indicates that Bluetooth is ON (the number below indicates the connected devices)
	[Wi-Fi Status]	OFF	Indicates that Bluetooth is OFF
6 Battery status	[Battery Level]	Illuminating	Indicates the remaining battery level on a scale of 6 levels
	[Battery Level]	Illuminating	Appears under the battery icon while Energy Saving is set
	[Battery Level]	Illuminating	Indicates that the battery is being charged
	[Battery Level]	Illuminating	Provides an approximate visual indication of the remaining battery level while charging
7 Idle state	[Idle State]	Illuminating	Indicates the idle state (appears when the POWER button is pressed while charging)
	[Idle State]	Illuminating	Indicates that the remote-activation is set (appears when the POWER button is pressed while charging)
8 Messages	[Messages]	Illuminating	Indicates various messages
9 Data communication amount	[Data Comm. Amount]	Illuminating	Indicates when the data communication amount is set

Product Specifications

■ Main Unit	
Physical dimensions (W x H x D)	Approx. 109 (W) x 66 (H) x 9.0 (D) mm
Weight	Approx. 97g
Interface	USB2.0 High Speed (microUSB terminal) *1
	Compatible with Bluetooth 4.0 Wireless Technology
Display	Organic electroluminescence display (monochromatic), approx. 1.6 inch
Power supply	DC5.0V, 1.5A
Battery pack	Lithium ion, 3.7V, 2500mAh
Waiting state Approx. 35 hours	
Continuous standby time *1	Idle state (Remote start available): Approx. 400 hours
	Idle state (Remote start not available): Approx. 550 hours
Continuous communication time *1 *2	BWA (44 MIMO communication): Approx. 400 minutes
	BWA (2x2 MIMO communication): Approx. 520 minutes (power saving is set)
	BWA (4x4 MIMO communication): Approx. 400 minutes
	BWA (2x2 MIMO communication): Approx. 620 minutes (power saving is set)
Operating environment	Operating temperature range: 5°C to 35°C
	Operating humidity range: 35% to 85%
Charging time	Approx. 180 minutes (using the enclosed AC adapter)
■ WAN	
Communication methods	BWA, Wi-Fi (compliant with IEEE802.11ac/n/a/g/b)
Supported frequencies	BWA: 2.4GHz
	Wi-Fi: 2.4GHz/5GHz
■ LAN	
Communication methods	Wi-Fi (compliant with IEEE802.11ac/n/a/g/b), compliant with Bluetooth 4.0 Wireless Technology
Supported frequencies	Wi-Fi: 2.4GHz/5GHz / Bluetooth: 2.4GHz
Wi-Fi security methods	WEP: 128bit
	WPA-PSK, TKIP / AES
Maximum number of simultaneous connections	Wi-Fi: 10 devices / USB: 1 device / Bluetooth: 7 devices
■ AC adapter	
Input	AC100 to 240V, 50/60Hz
Output	DC5.0V, 1.5A
Physical dimensions	Approx. 47 (W) x 54 (H) x 19 (D) mm
Weight	Approx. 41g
Operating environment	Operating temperature range: 5°C to 35°C
	Operating humidity range: 35% to 85%
Length	Approx. 1.6m
Weight	Approx. 30g
Interface	USB plug Type A
	microUSB plug Type B

This product can be used with OSs such as Windows*, Macintosh, Linux, etc. which support TCP/IP protocol stack (Japanese OS only).
However, the following OSs are supported during USB connection.
Windows* 7 supporting:
- Internet Explorer 8.0/9.0/10.0/11.0
- Firefox 34
- Google Chrome 39
- Opera 26
Windows* 10, Windows* 8.1, Windows* 8, Windows* 7
Japanese version, 32bit (x86) version and/or 64bit (x64) version, Japanese version of Windows Vista* (SP2 and later)
32bit (x86) version and Mac OS X v10.5 (Intel), v10.6 (Intel), v10.7 (Intel), v10.8 (Intel), v10.9 (Intel), v10.10 (Intel).
The following WWW Browsers are available when performing settings in Quick Setting Webpage.
Windows 10 supporting:
- Microsoft Edge
- Internet Explorer 11.0
Windows 8.1 supporting:
- Internet Explorer 11.0
- Firefox 34
- Google Chrome 39
- Opera 26
Mac OS X v10.10 supporting:
- Safari 8.0
- Firefox 34
- Google Chrome 39
- Opera 26
Mac OS v10.9 supporting:
- Safari 7.0
- Firefox 34
- Google Chrome 39
- Opera 26
Mac OS v10.8 supporting:
- Safari 6.0
- Firefox 34
- Google Chrome 39
- Opera 26
Android (2.3.3/3.0/3.1/3.2/4.0/4.1/4.2/4.3/4.4/5.0) supporting:
- Android standard browser
iOS (5.0/5.1/6.0/6.1/7.0/7.1/8.0/8.1) supporting:
- iOS standard browser